

## Activation

SensorLab runs in Evaluation mode with most loggers and sensors until activated.

SensorLab version 1.1 is supplied pre-activated for uLog USB Sensors.

Evaluation mode enables the software to be evaluated before purchase. The evaluation version can also be downloaded and used to update an earlier installation. To evaluate SensorLab Plus select “Evaluate SensorLab Plus” from the Help menu.

In evaluation mode there are a number of limitations:

- Printouts are defaced
- Logged data can not be saved
- Logging is limited to a maximum of 8 minutes in duration

Activation enables functionality according to the licence purchased. There are two levels of functionality:

- Standard
- Plus

SensorLab Standard is generally included with LogIT data logging systems and has a similar level of functionality to the earlier LogIT Lab 4 software. The supplied licence may be for a single user or for a complete site. Generally SensorLab Standard only supports the data logging system it is supplied with.

SensorLab Plus is purchased as additional software. It has extra features and generally includes a full site licence. The extra features include support for all LogIT data logging systems. For a full list of the major extras features, see the section “SensorLab Editions”.

At any time, in Manager mode, the Activation option is available from the File, Administrator menu.

Once the licence terms have been accepted, the activation details may be entered. First enter Name, Organisation and Post/zip code details, then enter the activation code and click Apply. More than one activation code can be entered in this way. This may be necessary if the software is initially purchased as single user, then a site licence upgrade is purchased.

Activation code details can be found on the licence sheet supplied with SensorLab software.

The activation mechanism is described more fully in the installation document and the user guide (both PDF files). Network managers should read the installation guide.

# LogIT SensorLab™

Copyright © 2009-2011 SCC Research

For support visit [www.logitworld.com](http://www.logitworld.com)

Further information can be found in the Documentation folder of the SensorLab distribution CD and also in the internet download version. These PDF files include the SensorLab User Guide and the SensorLab Installation Guides for Linux, Mac OS X and Microsoft Windows.

## Introduction

SensorLab software is used to make measurements from sensors, such as Temperature, Light and Sound.

Sensors are represented by icons, like these:



Temperature

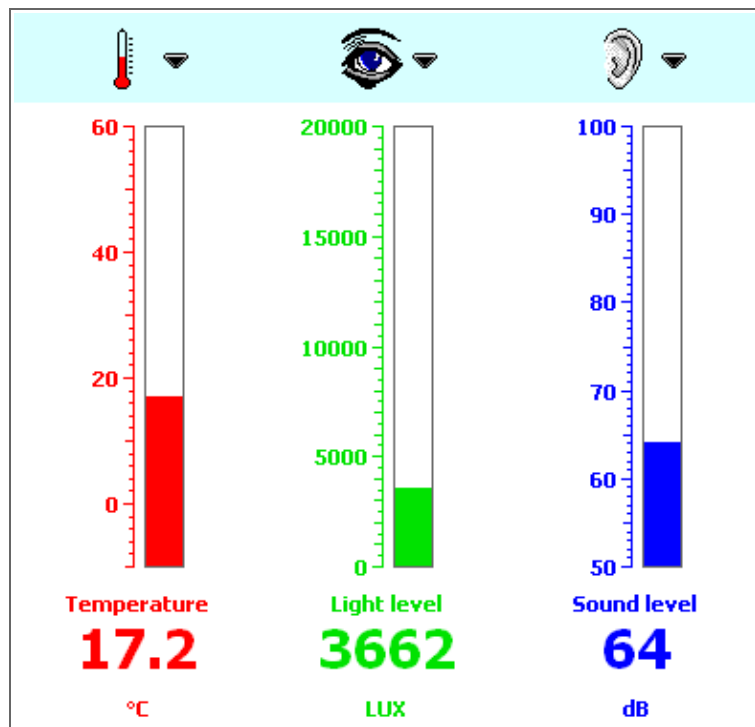


Light



Sound

Measurements can be displayed as numbers and gauges.



Notes:

- 1 Limited support for LogIT model SL (no remote set up)
- 2 Change tool was known as Difference tool in LL4. SensorLab has new difference tool.

## Standard and Plus Editions

SensorLab Standard is generally included with LogIT data logging systems and has a similar level of functionality to the earlier LogIT Lab 4 software.

SensorLab Plus is purchased as additional software. It has extra features and generally includes a full site licence. The extra features include support for all LogIT data logging systems.

## Licence

In addition to being available with Standard or Plus features, SensorLab is also supplied with either a Single User Licence or a Full Site Licence.

A single user licence entitles the purchasing organisation to run one copy of SensorLab on one computer at a time. This can be on any one of the supported operating systems.

A site licence entitles the purchasing organisation to run any number of copies of SensorLab on any number of computers, with any supported operating system, at the purchasing organisation's single postal address. In addition, it can be run on any computers belonging to the purchasing organisation but temporarily used away from the organisation's postal address. It can also be used at home by staff and students of the purchasing organisation.

Full licence details are shown by selecting Software Activation from the File, Administrator menu.

## Level of Sophistication

SensorLab can be set to one of four levels of sophistication. Level four is the most sophisticated.



Some menu options and some display features may not be available depending on the current Level.

## SensorLab Editions

SensorLab can have either *Standard* functionality or *Plus* functionality. The following table highlights the major extra features found in SensorLab Plus and includes a comparison with LogIT Lab 4.

Features	LogIT Lab version 4	Sensor Lab Standard	Sensor Lab Plus
Windows 2000, XP, Vista, 7	Yes	Yes	Yes
Mac OS 10.4, 10.5 or 10.6	No	Yes	Yes
Linux (selected distributions)	No	Yes	Yes
Bluetooth, Serial and USB	Yes	Yes	Yes
Bundled with most loggers	Yes	Yes	No
Site licence	Optional	In bulk packs	Optional
Support all LogIT loggers	Universal only	No	Yes <sup>1</sup>
Resources / worksheets	Hyperstudio	Any format	Any format
Set up template files	No	No	Yes
Calculate data with user formula	No	No	Yes
Absolute time and date in table	No	No	Yes
Variable smoothing	No	No	Yes
Analysis tools	Reading Difference Gradient Area	Position Reading Change <sup>2</sup> Gradient Area	Position Reading Change <sup>2</sup> Difference Gradient Area
Standard deviation	No	No	Yes
Function plotting	Straight line fit Differentiation Integration	Straight line fit Differentiation Integration	Straight line fit Differentiation Integration Difference Product
Overlay oscilloscope traces	No	No	Yes
Overlay data from file	No	No	Yes
Table highlight tracks cross hair	No	Yes	Yes
Overlapping timing events	No	Yes	Yes
Create set up template file	No	No	Yes
Select channel colours	No	No	Yes
Select colour theme	No	No	Yes
Time and date on X axis	No	No	Yes

Measurements can be logged using two simple buttons:



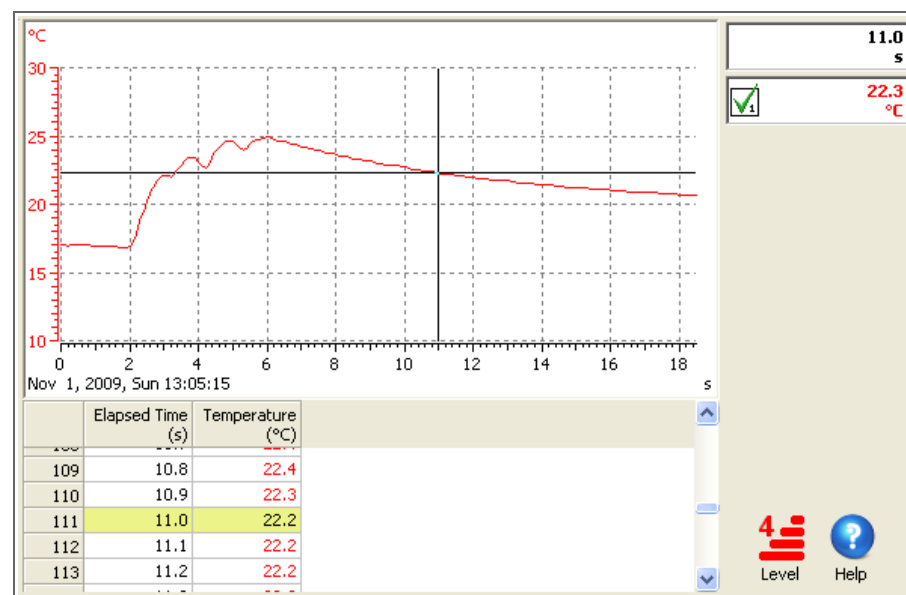
The green button starts logging



The Red button stops logging

These buttons perform similar functions to those on popular LogIT data loggers.

Logged measurements can be viewed and analysed using graphs and tables.



Further information is available in the SensorLab User Guide (PDF file) included in the documentation folder on the distribution CD and internet download.

## Supported Operating Systems and Hardware

SensorLab software is cross-platform (it is available for a number of different operating systems). These are:

- Linux
- Mac OS X
- Microsoft Windows

SensorLab supports most recent releases of these operating systems.

Further details are available in the installation guide (PDF file) for each operating system. This can be found on the distribution CD.

### Computer Specification

Any computer hardware which runs one of the supported operating systems should run SensorLab equally well.

SensorLab has been designed to work with small screen Netbook computers, such as the Acer Aspire One and Asus Eee series.

The minimum computer specification required to run SensorLab is:

- Screen VGA (640 x 480 pixels) in 16-bit colour (64,000 colours)
- Processor speed 1 GHz single core
- Hard disk space 5 to 15 Mbytes depending on operating system
- Memory Depends on the operating system
  - Linux typically 512 Mbytes
  - Mac OS X 256 Mb for 10.4, 512 Mb for 10.5, 1 Gb for 10.6
  - Windows 256 Mb for 2000 and XP, 1 Gb for Vista and 7
- Ports 1 free USB port (or serial port for older logger)

### Linux

SensorLab should run on most recent Linux distributions. However, there are a great many Linux distributions and we can not guarantee compatibility with all of them. Further details can be found in the SensorLab installation guide (PDF file). Check [www.logitworld.com](http://www.logitworld.com) for the latest information on supported distributions.

### Mac OS X

The Mac OS X version of SensorLab runs on both Intel and PowerPC based Macs, which have Mac OS X 10.4 (Tiger), 10.5 (Leopard) or 10.6 (Snow Leopard).

### Microsoft Windows

The Windows version of SensorLab runs on Windows 2000, Windows XP, Windows Vista and Windows 7.

## Installing SensorLab

SensorLab is supplied with installation packages for each supported operating system.

Full installation instructions are supplied in separate PDF files on the CD.

Please note that SensorLab runs in Evaluation mode with most logger and sensors until activated. Currently it is supplied pre-activated for uLog USB Sensors.

If SensorLab is provided in a single archive file, such as a ZIP or TGZ file, it will be necessary to extract the contents before installing the software.

SensorLab is provided in two basic formats:

- Installation Package
- Manual Installation

The Installation Package follows normal conventions to install the software. This can be found in the “Installer” folder.

The Manual Installation format provides raw files for manual installation and, in some cases, provides a means of running the software without the need to install it first. This can be found in the “Program” folder.

The ability to run the software without installation allows it to be used directly from a USB memory device. Unless the computer's security prevents you from doing so, you should just be able to walk up to a computer, connect a USB memory device containing the SensorLab program and run SensorLab. In some cases installation is needed to set up or authorise communications with loggers and sensors.

### Linux

Installation on Linux is a little bit more complex than the other platforms, primarily because of the way tight security does not allow free access to Serial and USB ports. It is therefore highly recommended that you read the installation instructions document very carefully.

### Mac OS X

The Mac version has a conventional installation package. The program can be copied to the Applications folder with a simple drag and drop, but that does not set up USB handling so the program will run but may not communicate with loggers and sensors.

### Microsoft Windows

Installation on Windows uses a conventional “Setup” program. An MSI file is included for network managers. SensorLab can also generally be run without installation by double clicking on the SensorLab file in the “Program” folder of the distribution CD.